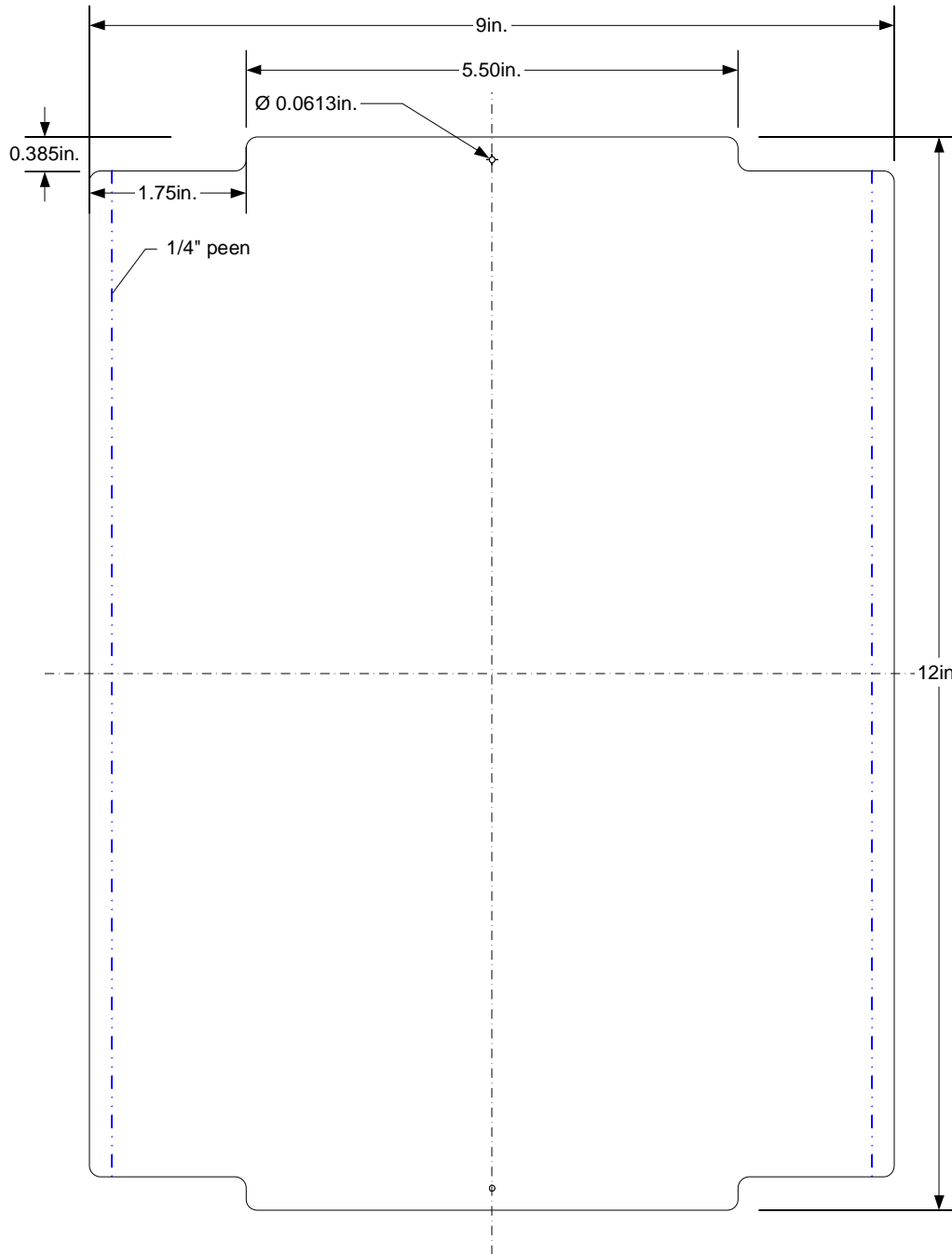
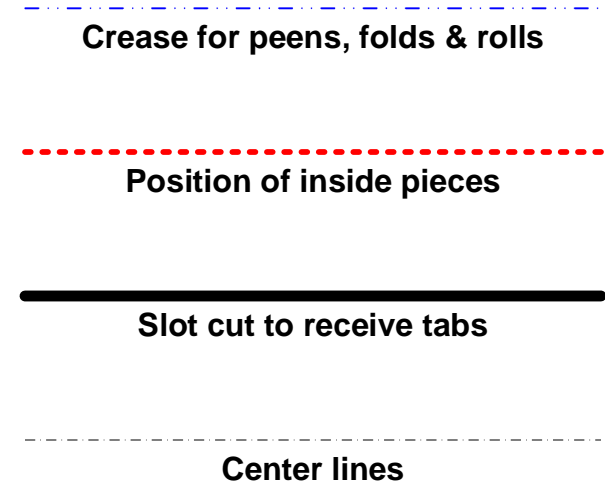


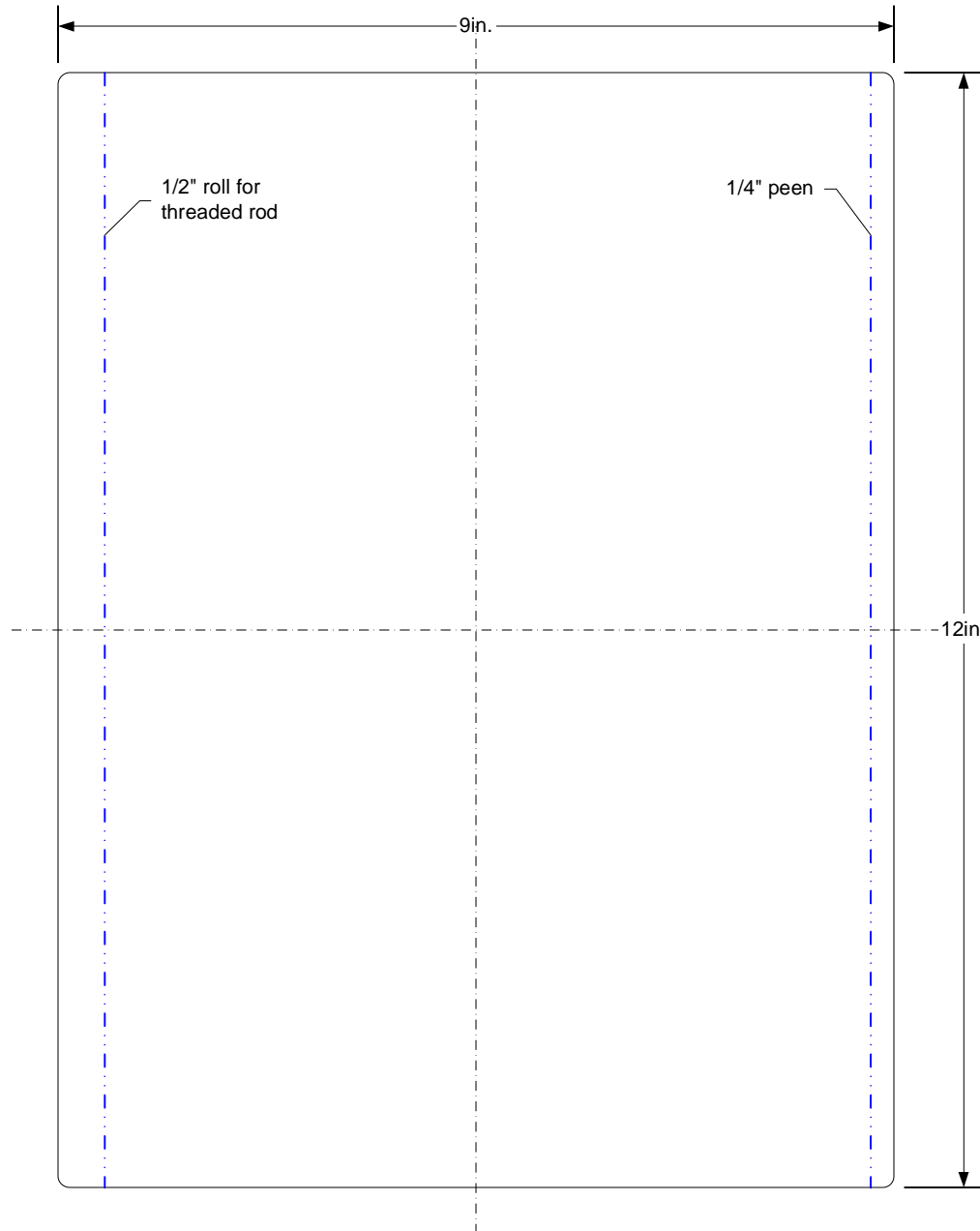
Bottom



Key



Top



Notes

- ✓ The front edge is bent at 90 degree angle to the face.
- ✓ The back edge is a full peen bent up and back over.
- ✓ Both the peen and the bend must face out to allow the top clearance to swing and for the shelf to extend slightly forward of the side when assembled. So the bends and peens on each side are opposite of each other.
- ✓ The top piece rests on the back edge of the bottom to create a handle to easily lift the top up.
- ✓ Measurements and cutting for the slots and drilling the hole are to be done before peening and bending.
- ✓ Holes in tabs are sized to accept spare tent stakes.